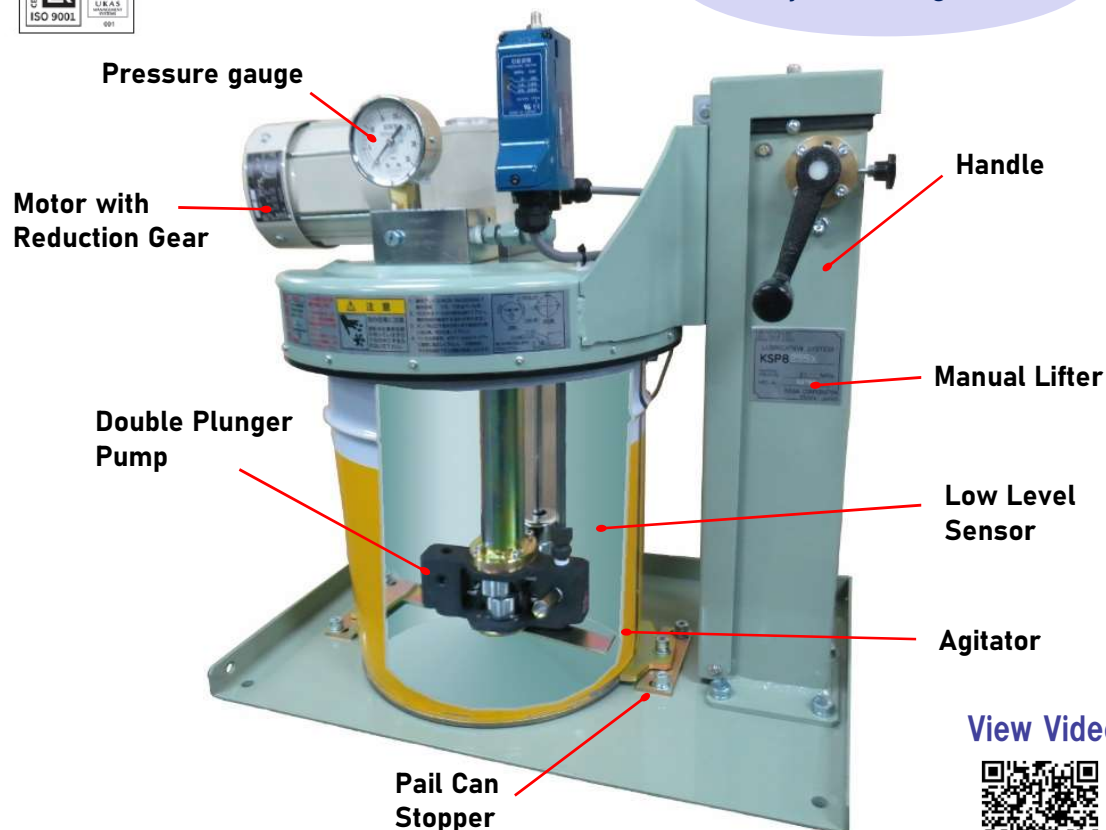


Pail direct-coupled Electric Grease Pump

KSP820

KWK

KWK



Patented
Utility model registered

Discharge Pressure: 20.6MPa Pail: Use 16kg or 18kg Pail

View Video



Durable Pump



Double plunger pump without check valves. Resistant to foreign objects and air bites.



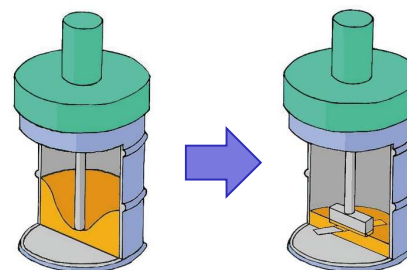
Easy to replace



Can be used directly from a pail. Easy and safe replacement of the pail. No follower plate is needed.



Cost Saving



In general piston pumps, grease remains in a mortar. With this innovative pump, an agitator levels the grease surface and helps the pump to suck it efficiently, reducing the amount of grease remaining.



Stable discharge

Air pumps have a significantly lower discharge rate in winter due to the hardening of the grease, whereas electric pumps always have the same discharge rate.

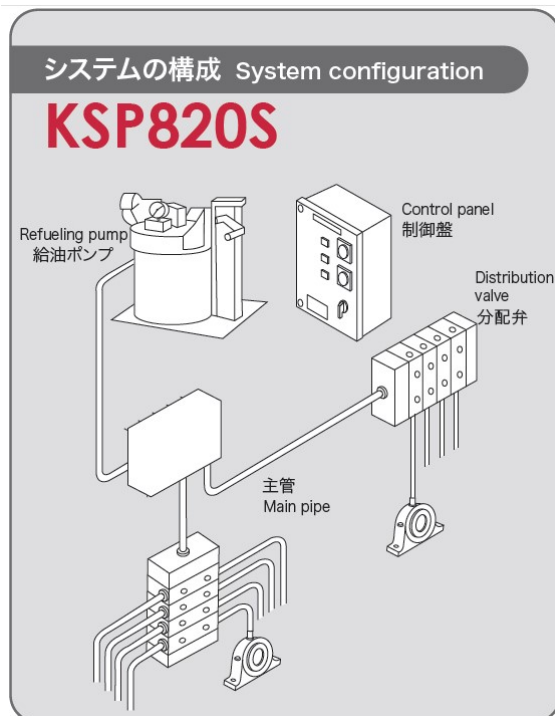
- Available Grease: NLGI grade #0~#1
- Amount of remaining grease is very low.
- Directly connected to a pail. No need to transfer the grease.
- Only the plunger pump body can be replaced.
- No follower plate is applied. Very easy to replace the pail can.
- Highly resistant to foreign object contamination and air biting.

MODEL	Discharge amount cm ³ /min (50/60Hz)	Pump	Reduction Ratio	Motor(kW)
KSP821	113/136	Twin Pump	1/11	0.4
KSP822	82/100		1/15	
KSP823	62/75		1/20	
KSP824	41/50	Single Pump	1/15	0.2
KSP825	31/38		1/20	
KSP826	20/25		1/29	
KSP827	15/18		1/40	



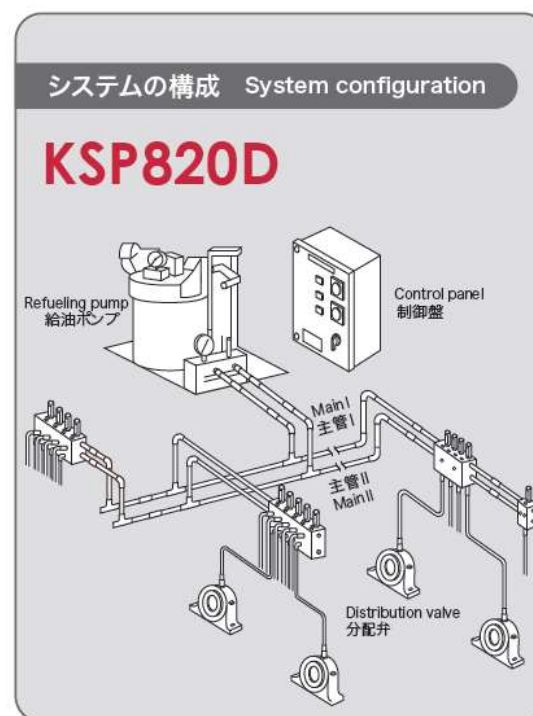
KOWA CORPORATION

SINGLE LINE SYSTEM



Used in combination with distribution valves for single-line system. More advanced lubrication can be achieved by combining with optional items such as pressure switch, Grease checker, etc.

DUAL LINE SYSTEM

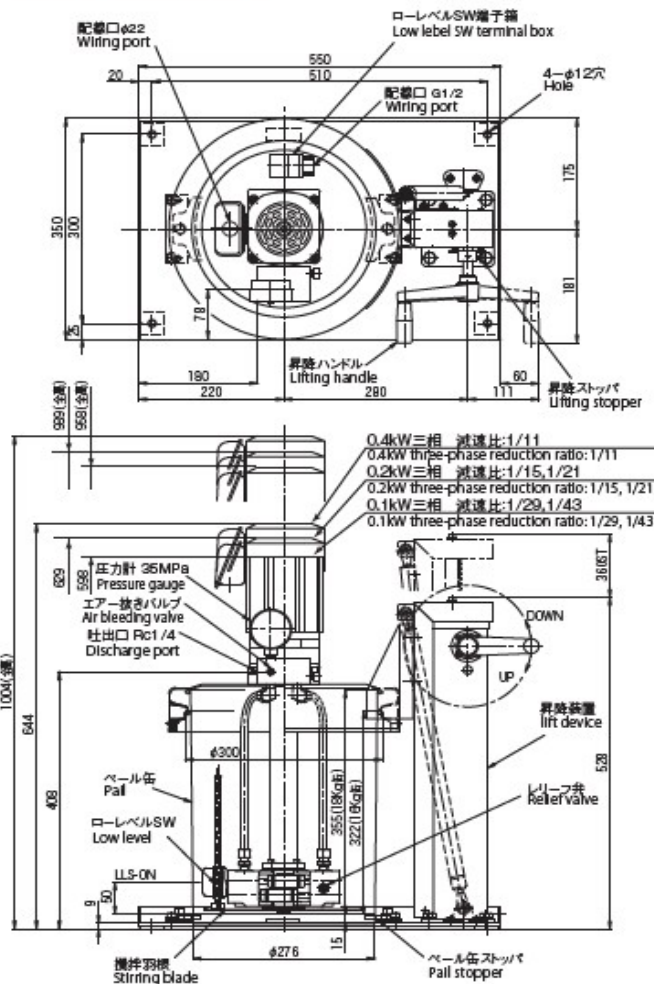


Used in combination with distribution valves for dual-line systems. The included hydraulic switching valve is for short loop piping.

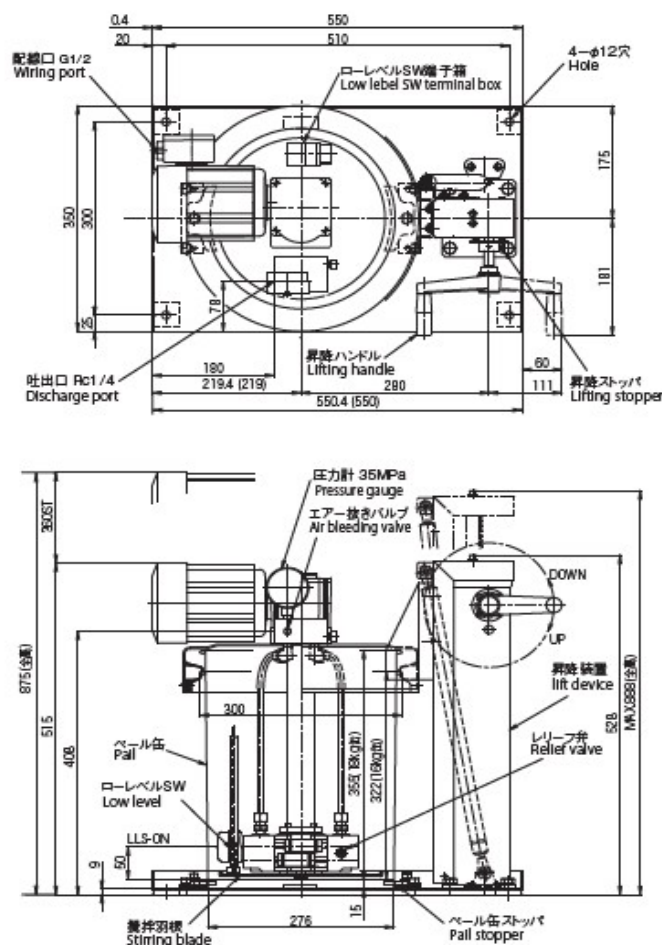


SINGLE LINE SYSTEM

KSP820SV



KSP820SX



()内数値は0.1kW電動機使用時の寸法を示します。
The values in parentheses indicate the dimensions when using a 0.1kW motor.

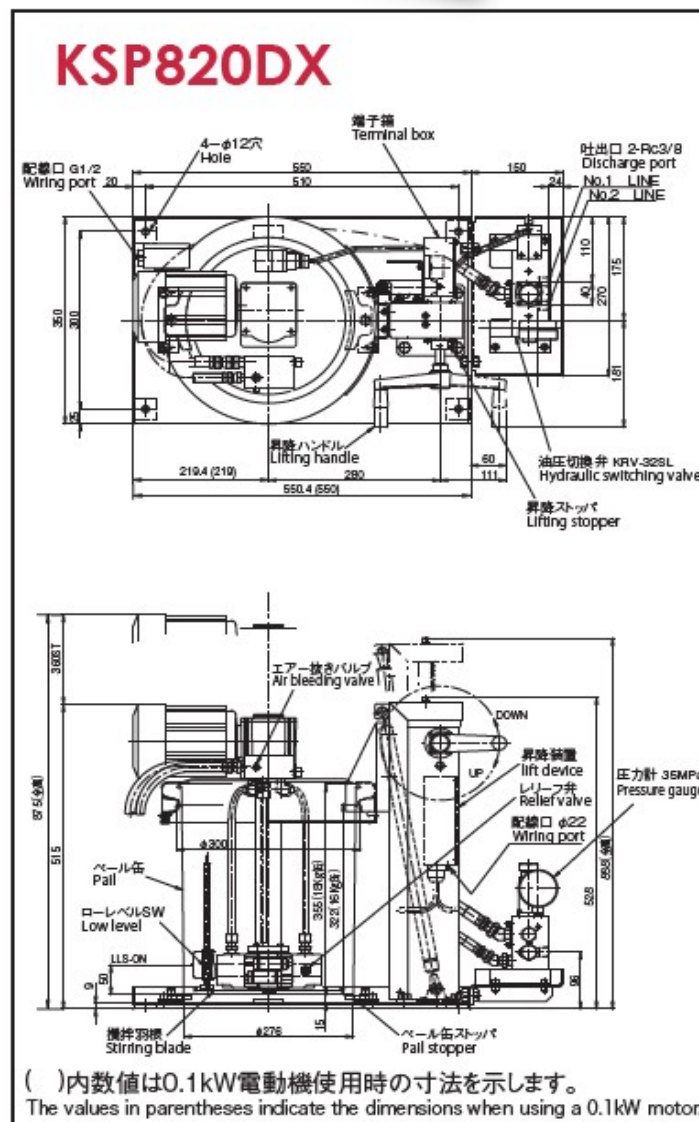
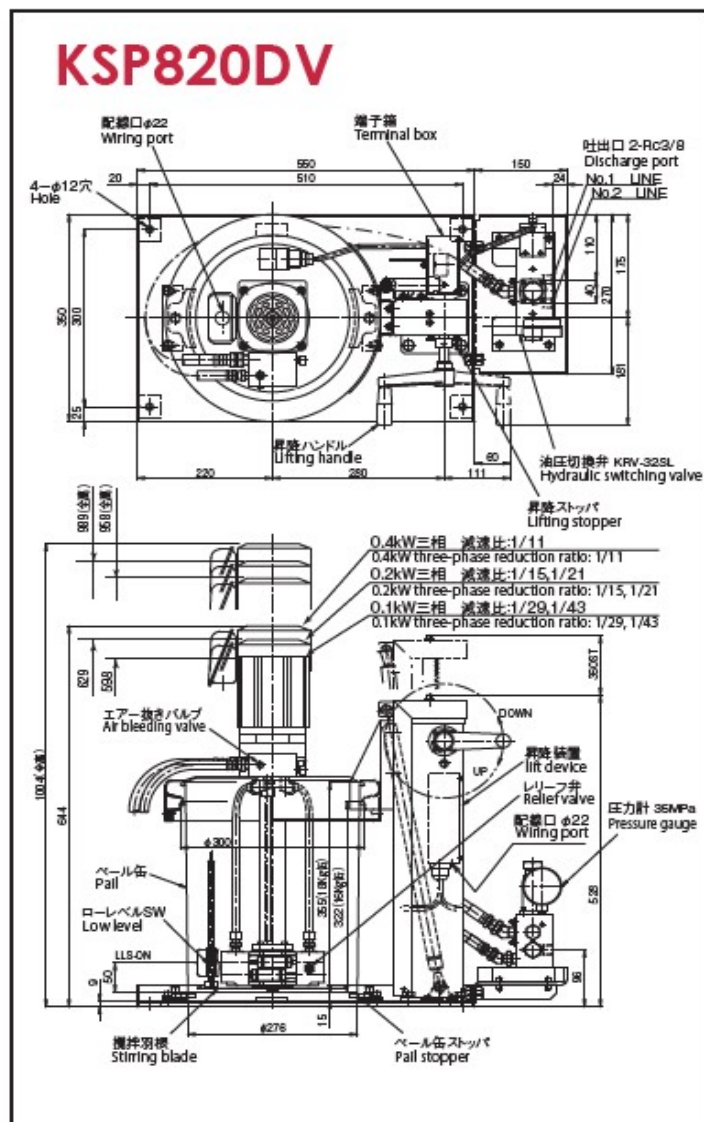
MODEL LINEUP OF DISCHARGE AMOUNT

型 式 Model	吐出量 ml/min Discharge rate (50/60Hz)	吐出圧力 Discharge pressure (MPa)	ポンプ Pump	減速比 Reduction ratio	電動機 Electric motor (kW)
KSP821 □ V	113/136	20.6	ツイン Twin	1/11	0.4
KSP822	82/100			1/15	0.2
KSP823 □ V	59/71			1/21	0.2
KSP823 □ X	62/75			1/20	0.2
KSP824	41/50		シングル Single	1/15	0.2
KSP825 □ V	29/36			1/21	0.2
KSP825 □ X	31/38			1/20	0.2
KSP826 □ V	20/25			1/29	0.1
KSP826 □ X	20/25			1/30	0.1
KSP827 □ V	14/16			1/43	0.1
KSP827 □ X	15/18			1/40	0.1

STANDARD SPECIFICATION

1. The 0.4kW motor is available only for V-type reducer.
 2. A gas spring is attached to the lifting device.
 3. Use NLGI No. 0 - 1 in 16,18 kg pail can of grease.
 4. When used for a long time at 0 °C or less, there will be possibility that the discharge amount decreases, the resistance of the stirring blade increases, the motor overloads, and the low level switch operates incorrectly. Please note that the same phenomenon will occur even at room temperature if grease with a lower consistency is used.
 5. The low level switch is attached to the pump of the single line and dual line refueling system. The operation of the low level switch is about 2.8 liters on the horizontal oil level of the remaining amount of the pail.
- The capacity of the switch is 50VA AC300V switching current 0.5A.
6. The paint color is Munsell 2.5G 6/2.
 7. Please contact us if it is used for oil.
 8. Use KSP-850 (separate catalog) for high-viscosity grease with LGI No. 2 or higher.

DUAL LINE SYSTEM



MODEL LINEUP OF DISCHARGE AMOUNT

型 式 Model	吐出量 ml/min Discharge rate (50/60Hz)	吐出圧力 Discharge pressure (MPa)	ポンプ Pump	減速比 Reduction ratio	電動機 Electric motor (kW)
KSP821 □ V	113/136	20.6	ツイン Twin	1/11	0.4
KSP822	82/100			1/15	0.2
KSP823 □ V	59/71			1/21	0.2
KSP823 □ X	62/75			1/20	0.2
KSP824	41/50		シングル Single	1/15	0.2
KSP825 □ V	29/36			1/21	0.2
KSP825 □ X	31/38			1/20	0.2
KSP826 □ V	20/25			1/29	0.1
KSP826 □ X	20/25			1/30	0.1
KSP827 □ V	14/16			1/43	0.1
KSP827 □ X	15/18	1/40	0.1		

STANDARD SPECIFICATION

1. The 0.4kW motor is available only for V-type reducer.
 2. A gas spring is attached to the lifting device.
 3. Use NLGI No. 0 - 1 in 16,18 kg pail can of grease.
 4. When used for a long time at 0 °C or less, there will be possibility that the discharge amount decreases, the resistance of the stirring blade increases, the motor overloads, and the low level switch operates incorrectly. Please note that the same phenomenon will occur even at room temperature if grease with a lower consistency is used.
 5. The low level switch is attached to the pump of the single line and dual line refueling system. The operation of the low level switch is about 2.8 liters on the horizontal oil level of the remaining amount of the pail.
- The capacity of the switch is 50VA AC300V switching current 0.5A.
6. The paint color is Munsell 2.5G 6/2.
 7. Please contact us if it is used for oil.
 8. Use KSP-850 (separate catalog) for high-viscosity grease with LGI No. 2 or higher.