

### Durable

Agitator specialized for viscous grease



### Economical

Reduce grease remaining



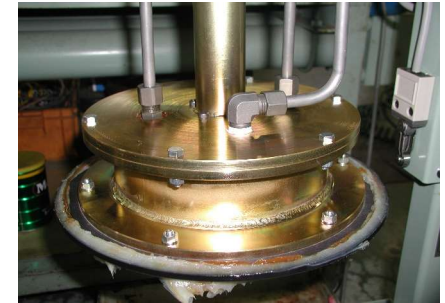
#### \*Demonstration experiment

NLGI grade No. 2 grease was successfully discharged even under the severe conditions of  $-20^{\circ}\text{C}$  temperature.



### High Sealability

Follower Plate maintains a vacuum in pail.



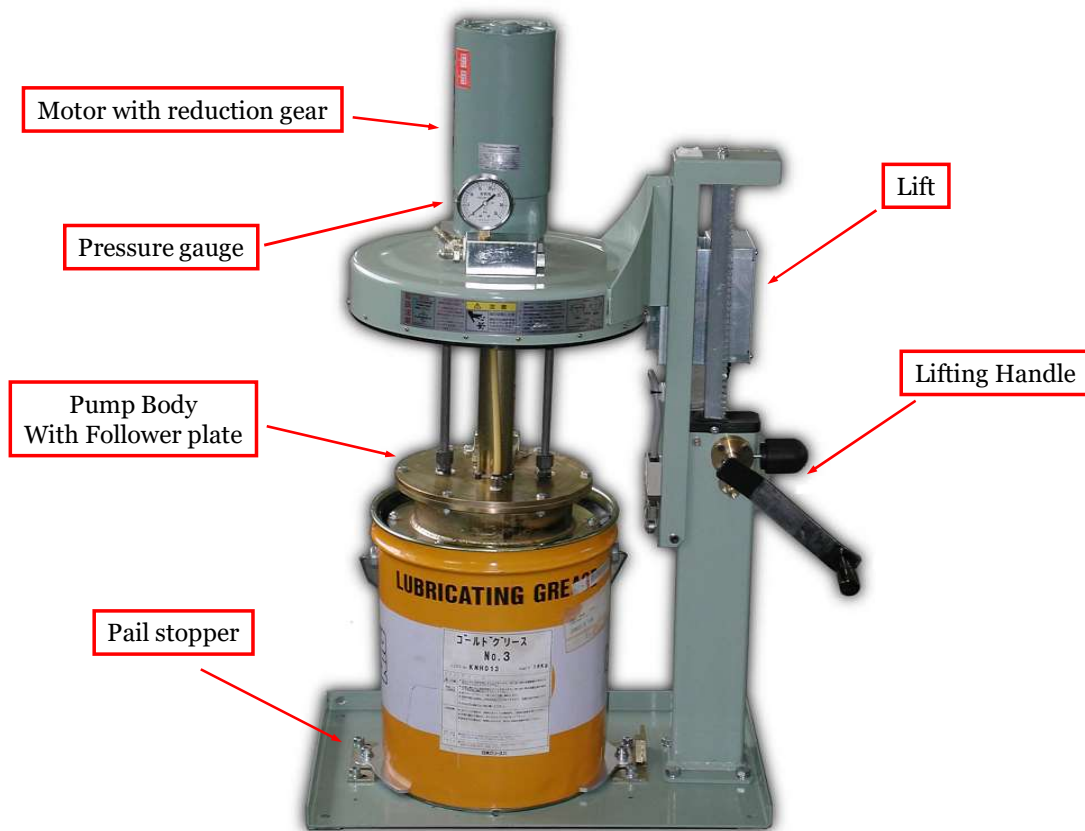
### Safe

Easy and safe pail replacement by handle

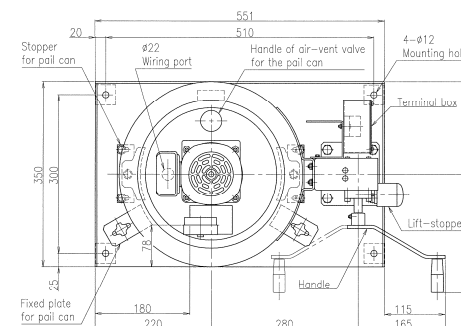


### Stability

Pail stopper firmly holds the pail in the place

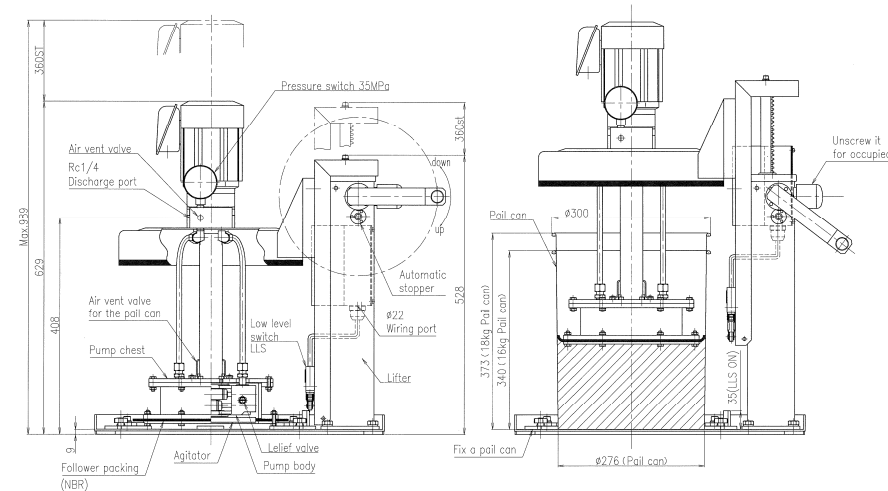


### Outer Dimension (KSP851SV)



## \* Note

1. Please turn off power when you work.
2. Please open the air vent valve for pail can when you move the pump. Please close the air vent valve for pail can after setting.
3. When you change a pail can, put up a lifter to a top, and please fix a handle with a lift-stopper.  
Automatic stopper operates in a top. When you lower a lifter, please loosen the lift-stopper.
4. Because it is danger, you remove it from a bottom of a pump, and please do not put a hand or a tool in a pump chest.  
There is a agitator inside.



**Suitable for viscous grease NLGI grade No.2 ~ 4**

- Useable Grease: NLGI grade #0~#4
- Amount of remaining grease is very low.
- Very space-saving for a grease pump that supports viscous grease.
- No heating or air pressurization is required.
- Follower plate ensures excellent sealing.
- Double plunger without check valve is applied.
- Highly resistant to foreign object contamination and air biting.

Discharge Pressure: 20.6MPa

Paint Color: Munsell 2.5G6/2

**Pail: Use 16kg or 18kg Pail**

MODEL	Discharge amount ml/min (50/60Hz)	Pump	Reduction Ratio	Motor(kW)
KSP851	113/136	Twin Pump	1/11	0.4
KSP852	82/100		1/15	0.2
KSP853	59/71		1/21	
KSP854	41/50	Single Pump	1/15	
KSP855	29/36		1/21	